

## APXVBB26H2\_43-C-I20

### APXVBB26H2\_43-A-I20

### Features

- 4 ports / 2 cross pol systems in low band (698-960 MHz)
- Integrated and field replaceable SRET
- ACU HW version: HRLS200608H1.00
- Optional with Direct Pipe No Tilt mounting hardware (Model name suffix -A-I20)
- Compliant with AISG v2.0 and 3GPP
- Optimized radome for low windload



<b>PRODUCT OVERVIEW</b>	Frequency Range (MHz)	698-960	
	Array	■ R1	■ R2
	Connector	1-2	3-4
		4 PORTS	
	Polarization	XPOL	
	Azimuth Beamwidth (avg)	65°	
	Electrical Downtilt	0-10°	
	Dimensions	2498 x 469 x 205 mm (98.4 x 18.5 x 8.1 in)	

### ORDERING OPTIONS

Select from the following ordering options

ANTENNA MODEL NUMBER	CONFIGURATION	MOUNTING HARDWARE	MOUNTING PIPE DIAMETER	SHIPPING WEIGHT	MOUNTING HARDWARE WEIGHT
APXVBB26H2_43-C-I20	ACU-I20-H12I Internal RET Included	APM50-HS Beam Tilt Kit Included	50-125 mm (2.0-4.9 in)	42.6 kg (93.9 lbs)	9.0 kg (19.8 lbs)
APXVBB26H2_43-A-I20	ACU-I20-H12I Internal RET Included	APM50-HSN Direct Pipe No Tilt Mounting Kit Included	50-125 mm (2.0-4.9 in)	39.6 kg (87.3 lbs)	6.0 kg (13.2 lbs)



Quoted performance parameters are provided to offer typical, peak or range values only and may vary as a result of normal testing, manufacturing and operational conditions. Extreme operational conditions and/or stress on structural supports is beyond our control. Such conditions may result in damage to this product. Improvements to products may be made without notice.

## APXVBB26H2\_43-C-I20

### APXVBB26H2\_43-A-I20

#### ELECTRICAL SPECIFICATIONS

■ R1

Frequency Range		MHz	698-960		
		MHz	698-806	790-894	880-960
Polarization		---	±45°		
Gain	Over all Tilts	dBi	15.5 ± 0.5	15.9 ± 0.5	16.0 ± 0.1
	Max Gain	dBi	16.0	16.4	16.1
Azimuth Beamwidth (3 dB)		degrees	66.3° ± 3.5°	64.6° ± 3.5°	64.7° ± 4.7°
Elevation Beamwidth (3 dB)		degrees	8.7° ± 0.5°	7.9° ± 0.5°	7.0° ± 0.1°
Electrical Downtilt		degrees	0-10°		
Impedance		Ohms	50Ω		
VSWR (Return Loss)		---	1.5:1 (-14 dB)		
Passive Intermodulation 3rd Order for 2x20 W Carriers		dBc	-153		
Front-to-Back Ratio, Total Power, ± 30°		dB	23	22	22
First Upper Side Lobe Suppression		dB	17	19	22
Cross Polar Discrimination Over Sector		dB	13	10	9
Cross Polar Discrimination (XPD) at Mechanical Boresight (0°)		dB	19	20	23
Maximum Effective Power Per Port		Watts	250 W		
Cross Polar Isolation		dB	27		
Interband Isolation		dB	27		

Specifications follow BASTA guidelines.

#### ELECTRICAL SPECIFICATIONS

■ R2

Frequency Range		MHz	698-960		
		MHz	698-806	790-894	880-960
Polarization		---	±45°		
Gain	Over all Tilts	dBi	15.6 ± 0.5	16.0 ± 0.1	16.3 ± 0.5
	Max Gain	dBi	16.1	16.1	16.8
Azimuth Beamwidth (3 dB)		degrees	66.6° ± 3.5°	64.3° ± 3.8°	64.9° ± 4.0°
Elevation Beamwidth (3 dB)		degrees	8.7° ± 0.5°	7.9° ± 0.5°	7.1° ± 0.1°
Electrical Downtilt		degrees	0-10°		
Impedance		Ohms	50Ω		
VSWR (Return Loss)		---	1.5:1 (-14 dB)		
Passive Intermodulation 3rd Order for 2x20 W Carriers		dBc	-153		
Front-to-Back Ratio, Total Power, ± 30°		dB	23	22	22
First Upper Side Lobe Suppression		dB	17	19.3	22
Cross Polar Discrimination Over Sector		dB	15	10	9
Cross Polar Discrimination (XPD) at Mechanical Boresight (0°)		dB	22.7	22	27
Maximum Effective Power Per Port		Watts	250 W		
Cross Polar Isolation		dB	27		
Interband Isolation		dB	27		

Specifications follow BASTA guidelines.

Quoted performance parameters are provided to offer typical, peak or range values only and may vary as a result of normal testing, manufacturing and operational conditions. Extreme operational conditions and/or stress on structural supports is beyond our control. Such conditions may result in damage to this product. Improvements to products may be made without notice.

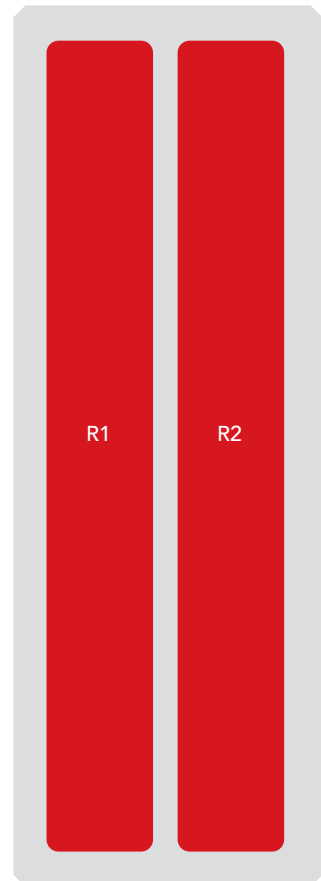
**APXVBB26H2\_43-C-I20**  
APXVBB26H2\_43-A-I20

**BOTTOM VIEW - LABELING**



**ARRAY LAYOUT**

ARRAY	FREQUENCY	CONNECTOR	CONNECTOR TYPE	RET	AISG RET UID
■ R1	698-960 MHz	1-2	(2x) 4.3-10 Female	R1	RFxxxxxxxxxx-R1
■ R2	698-960 MHz	3-4	(2x) 4.3-10 Female	R2	RFxxxxxxxxxx-R2



The illustration is not shown to scale.

**NOTE: RET MOTORS WILL TILT ONE AT A TIME, NOT SIMULTANEOUSLY.**

Quoted performance parameters are provided to offer typical, peak or range values only and may vary as a result of normal testing, manufacturing and operational conditions. Extreme operational conditions and/or stress on structural supports is beyond our control. Such conditions may result in damage to this product. Improvements to products may be made without notice.

## APXVBB26H2\_43-C-I20

### APXVBB26H2\_43-A-I20

#### MECHANICAL SPECIFICATIONS

Length		mm (in)	2498 (98.4)
Width		mm (in)	469 (18.5)
Depth		mm (in)	205 (8.1)
Net Weight - Antenna Only		kg (lbs)	27.2 (60)
Wind Load	Rated Wind Speed	km/h (mph)	150 (93)
	Frontal, Resultant	N (lbf)	693 (156)
	Side, Resultant	N (lbf)	720 (162)
	Rear, Resultant	N (lbf)	723 (163)
	Maximum Wind Load, Resultant	N (lbf)	1153 (259)
	Maximum Wind Load, Drag Force	N (lbf)	916 (206)
Survival / Rated Wind Velocity		km/h (mph)	200 (150)
Connector Type		--	(4x) 4.3-10 Female, (2x) AISG Connectors (1 Male, 1 Female) at Bottom
Radome Color		---	Light Grey RAL7035
Radome Material		---	Fiberglass
Lightning Protection		---	Direct Ground
<b>Shipping</b>	Packing Size (Length x Width x Depth)	mm (in)	2698 x 544 x 330 (106.2 x 21.4 x 13)

#### ENVIRONMENTAL SPECIFICATIONS

Environmental Standard	---	ETS 300 019
Operating Temperature	degrees	-40° to +60° C (-40° to +140° F)
Product Environmental Compliance	---	Product is RoHS Compliant

Quoted performance parameters are provided to offer typical, peak or range values only and may vary as a result of normal testing, manufacturing and operational conditions. Extreme operational conditions and/or stress on structural supports is beyond our control. Such conditions may result in damage to this product. Improvements to products may be made without notice.


## APXVBB26H2\_43-C-I20

### APXVBB26H2\_43-A-I20

**ACCESSORIES** Accessories may be ordered separately unless otherwise indicated.

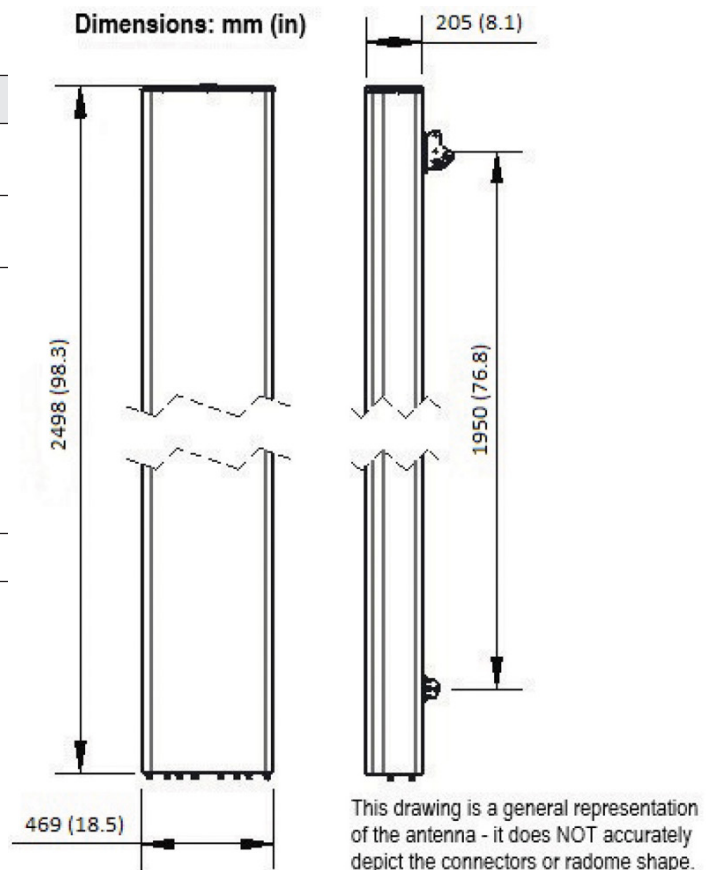
ITEM	MODEL NUMBER	WEIGHT
Beam Tilt Mounting Bracket Kit for Pole Diameter 50-125 mm (2.0-4.9 in) <i>Refer to ordering options</i>	APM50-HS	9.0 kg (19.8 lbs)
Direct Pipe No Tilt Mounting Bracket Kit for Pole Diameter 50-125 mm (2.0-4.9 in) <i>Refer to ordering options</i>	APM50-HSN	6.0 kg (13.2 lbs)

**INSTALLATION** Please read all installation notes before installing product.

	Always attach the antenna using all mounting points.
	Do not install antenna with the connectors facing upwards.

**EXTERNAL DOCUMENT LINKS**

[APM50 Mounting Kit Series Installation Instructions](#)



**NOTES**

Specifications follow BASTA guidelines.

For additional mounting information, please check **External Document Links**.

For Radiating Patterns: [Request pattern files](#)